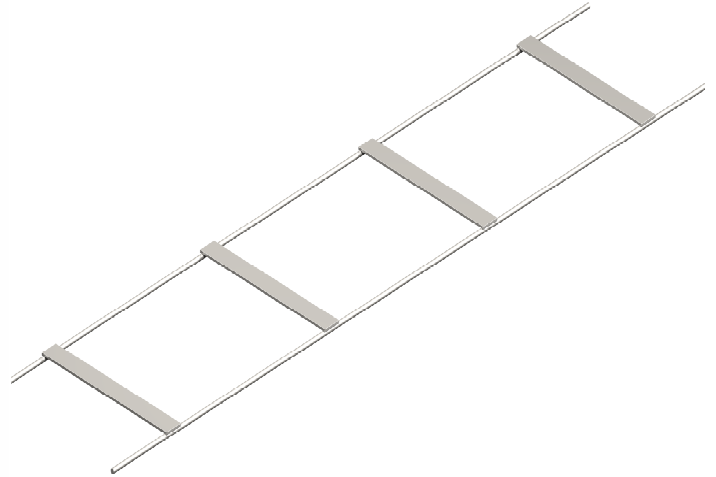


# ACS SCW175

- ✓ Ensures correct tie placement
- ✓ BS5628: 1 - 2005 compliant
- ✓ Grade 304 Stainless Steel
- ✓ 500N/mm<sup>2</sup> Min Tensile strength
- ✓ 3 - 5mm wire (0.5mm Increments)



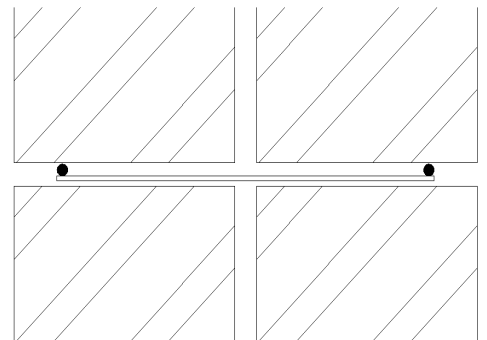
## Technical Data

ACS SCW175 is produced to enable a 215mm wall to be constructed as a collar joint wall in accordance with BS5628:1 2005. The welded cross ties join the two leaves together and eliminate the need for additional wall ties. Site problems caused by using single heavy blocks can be minimised. It ensures correct positioning of ties at 450mm centres whilst providing resistance to cracking in one leaf and structural reinforcement in the other. SCW175 is manufactured from grade 304, austenitic stainless steel in a range of wire diameters, from 3-5mm in 0.5mm increments and has a minimum characteristic tensile strength of 500N/mm<sup>2</sup>.

## Installation & Best Practice

SCW175 is designed to be installed into double leaf, collar jointed walls. A minimum mortar cover of 15mm must be achieved either side of the reinforcement, in line with the guidance of BS5628: Part 1, 2005. SCW175 is manufactured at 175mm, providing 20mm cover on a 215mm collar jointed wall.

On longer runs SCW175 should be overlapped by a minimum of 225mm to ensure the continuity of the reinforcement is maintained.



For further information or technical assistance please contact the ACS Technical Department on 0870 850 0860 or email [technical@acsstainless.co.uk](mailto:technical@acsstainless.co.uk)

**LEEDS**  
Cross Green Approach  
Cross Green Industrial Park  
Leeds LS9 0SG  
Tel: +44 (0)113 391 8200  
Fax: +44 (0)113 391 8209

**LONDON**  
Crown House  
Home Gardens  
Dartford  
Tel: +44 (0)1322 424 510  
Fax: +44 (0)1322 424 504

**GLASGOW**  
Festival House  
150 Brand Street  
Glasgow G51 1DH  
Tel: +44 (0)141 314 0048  
Fax: +44 (0)141 314 0026

