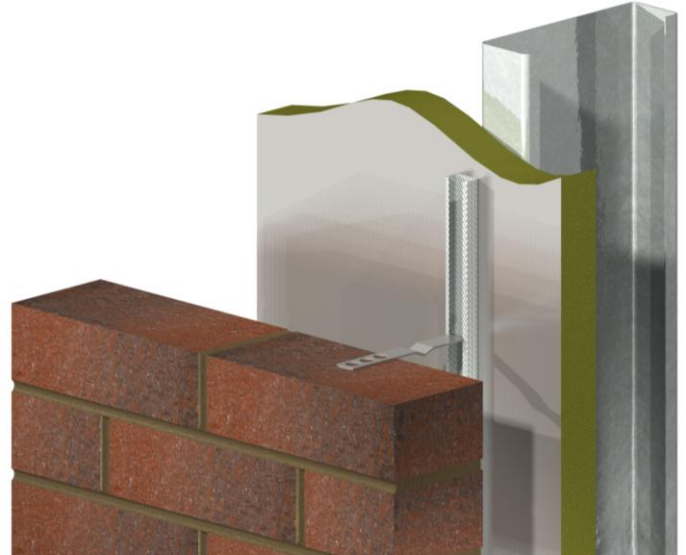


ACS Self Drilling Screw

- ✓ **Steel Framing Systems**
- ✓ **Channel Tie Systems**
- ✓ **High Thread**
- ✓ **Standards Screw Lengths**
Designed to suit insulation thickness
- ✓ **BS EN 1090-2: 2008**
- ✓ **BS EN ISO 10666: 1999**



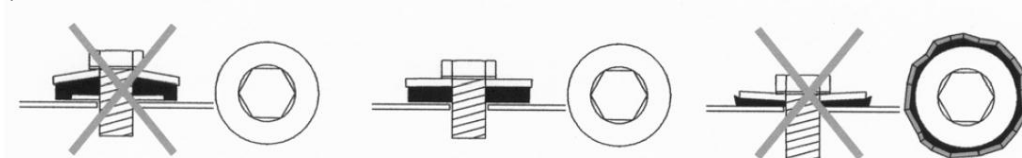
Installation & Best Practice

- A standard screwgun with a depth sensitive nosepiece should be used to install Tek's
- For optimal fastener performance, the screwgun should be a minimum of 6 amps and have an RPM range of 0-2500
- Adjust the screwgun nosepiece to properly seat the fastener.
- New magnetic sockets must be correctly set before use
- Remove chip build-up as required
- Overdriving may result in torsional failure of the fastener or stripout of the substrate
- The fastener must penetrate beyond the metal structure a minimum of 3 pitches of thread

Technical Data

Ultimate Fastener Loads		
Tensile	Shear	Tightening Torque
12.30kN	8.80kN	≤ 10.00Nm

Recommended loads vary depending upon the gauge of steel stud into which the screw is fixed. For more information contact the ACS technical department



Tightening torques should be gauged to ensure that the washer is installed and seated as illustrated above
(Image extracted from BS EN 1090:2 2008)

For further information or technical assistance please contact the ACS Technical Department on 0870 850 0860 or email technical@acsstainless.co.uk

LEEDS
Cross Green Approach
Cross Green Industrial Park
Leeds LS9 0SG
Tel: +44 (0)113 391 8200
Fax: +44 (0)113 391 8209

LONDON
Crown House
Home Gardens
Dartford
Tel: +44 (0)1322 424 510
Fax: +44 (0)1322 424 504

GLASGOW
Festival House
150 Brand Street
Glasgow G51 1DH
Tel: +44 (0)141 314 0048
Fax: +44 (0)141 314 0026

