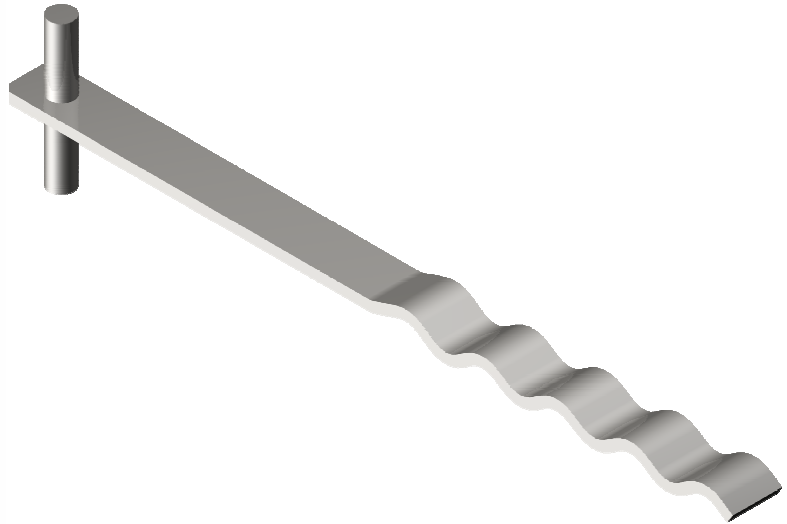


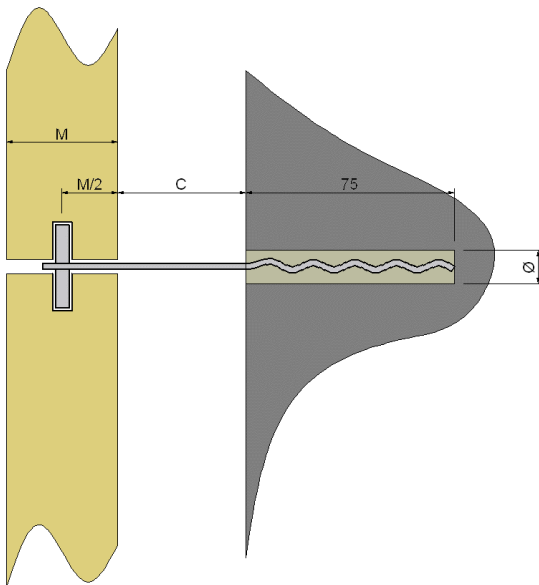
Grout-In Stone Restraint

- ✓ **Grade 304 Stainless Steel**
 - Material reference 3
- ✓ **1kN Load Capacity**
- ✓ **2 Gauges Systems**
 - 100 or 200mm Max Cavity
- ✓ **5mm Dowel**
- ✓ **Injection Resin or Grout**



Technical Data

The ACS Grout in Stone Restraint is a stainless steel tie designed for use with a concrete substrate. The tie is available in two gauges to accommodate loads of 1kN over a range of cavities. The tie must be embedded at least 75mm into the substrate using injection resin or a high strength mortar. Drilling a hole deeper than 75mm and increasing the embedment depth can accommodate small cavity deviations.



Tie Gauge mm	Max Cavity mm	Max Load Capacity N	Dowel Diameter mm	Drill Diameter mm
10 x 2	100	1000	5	12
12 x 3	200	1000	5	14

$$\text{Required Tie Length} = 75 + C + M/2$$

*See max cavity

For further information or technical assistance please contact the ACS Technical Department on 0844 850 0860 or email technical@acsstainless.co.uk

LEEDS
Cross Green Approach
Cross Green Industrial Park
Leeds LS9 0SG
Tel: +44 (0)113 391 8200
Fax: +44 (0)113 391 8209

LONDON
Crown House
Home Gardens
Dartford
Tel: +44 (0)1322 424 510
Fax: +44 (0)1322 424 504

GLASGOW
Festival House
150 Brand Street
Glasgow G51 1DH
Tel: +44 (0)141 314 0048
Fax: +44 (0)141 314 0026

