

## Azure Soffits & Lintels

To find out how Azure can benefit your project,  
call 0844 850 0860 or visit [www.acsstainless.com](http://www.acsstainless.com)



ACS Leeds  
0113 391 8200

ACS London  
01322 424 510

ACS Glasgow  
0141 314 0048

ACS Taunton  
0843 178 7220



# Azure: modular brick faced solutions

ACS Azure is a factory manufactured brick faced modular soffit, lintel and panel range for use on residential and commercial buildings.

Azure was Europe's first brick faced soffit solution. When the original system was first launched it revolutionised the way the industry thought about Masonry Support. Prior to this the most popular way to create a brick soffit involved suspending a brick beneath Masonry Support using drilled full sized bricks threaded along dowels or manoeuvring a large precast concrete unit then bolting it into place.

Today Azure facilitates the rapid installation of modular brick faced units, speeding the construction process and removing the need for highly skilled artisan bricklayers.

Its lightweight design removes dangerous and complex manual handling issues from site and significantly reduces labour costs.

The system has completed and passed the most rigorous testing programme ever seen for brick slip products. Designed to withstand years of extreme weather conditions, Azure is truly unique and unequalled in the market place.

All solutions are designed free of charge and custom made to a client's exact requirements.

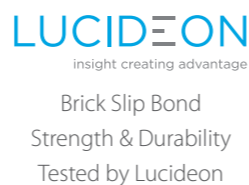
**Azure modular brick face solutions offer a range of unique benefits over traditional methods of construction:-**

- 90% saving on labour costs.
- 70% lighter than traditional solutions.
- Speeds construction time and accelerates build programs.
- Addresses numerous Health and Safety risks.
- Negates the need for highly skilled labour.
- Removes the need for complex brick cutting on site.
- Blends seamlessly with already constructed brickwork.
- Customised off site to clients requirements.
- Conceals primary and secondary steelwork.
- Complete stainless steel construction giving a minimum 60 year design life.
- Contains unique patented low profile bed-joint fixing mechanism.
- Incorporates the only special purpose masonry/steel resin system in Europe
- Designed to interface perfectly with ACS Masonry Support Systems.
- Can be procured directly from one supplier, on one invoice, on one delivery.

...all supplied to your specific needs by the fastest manufacturer in the industry.



Lintels tested by  
The Building Research  
Establishment



ISO 9001

**All Azure products are designed, manufactured, tested and warranted to the most rigorous standards in Europe.**

#### Design & Testing

- All design is conducted in line with the latest Eurocodes relevant to the product.
- To Eurocodes 3 (Steel) and 6 (Masonry) along with guidance from PD6697 amongst others.
- Lintels are designed in line with BS 5977: Part 2 and BS EN 845-2.
- Lintels tested by BRE in accordance with BS EN 846.

#### Approvals and Accreditations

- ACS operate a UKAS accredited BS EN ISO 9001 Quality Management System (SCCS)
- CE Marking - standard ancillary products (BS EN 845) & welded/fabricated products (BS EN 1090)

#### Warranties & Indemnities

- All products are covered by ACS product warranty and indemnities
- All stainless steel carries a minimum 60 year material guarantee
- Corrosion resistant grade 304 / 316 stainless steel
- CE Marked - BS EN 1090:2010
- Independently tested
- Accelerated 60 year cyclic weather tests
- Saturated freeze thaw
- Brick/bond strength load tests



0844 850 0860  
www.acsstainless.com



# Azure: modular brick faced soffits

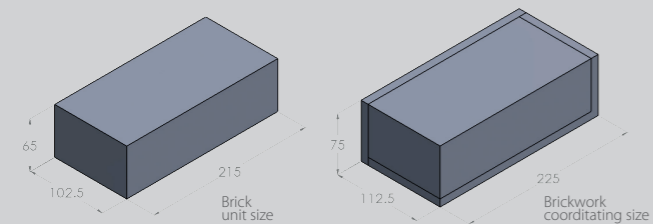
Azure soffit bolt ups are lightweight brick faced prefabricated units that are manufactured off-site and are supplied to the project with brick slips resin bonded to the surface. These units are quickly and easily mechanically fixed on site to ACS Masonry Support Systems to create a brick reveal or soffit detail.

The system can be safely installed in minutes by two semi-skilled construction operatives, removing the need for artisan bricklayers. On average installation times are reduced by 90%.

Azure is typically 70% lighter than the traditional concrete product that may have been specified previously. As a result dangerous and complex manual handling issues are removed from the site.

All our component brick slips are produced from the same batch of bricks on site so a perfect match is achieved blending the Azure seamlessly with already constructed brickwork.

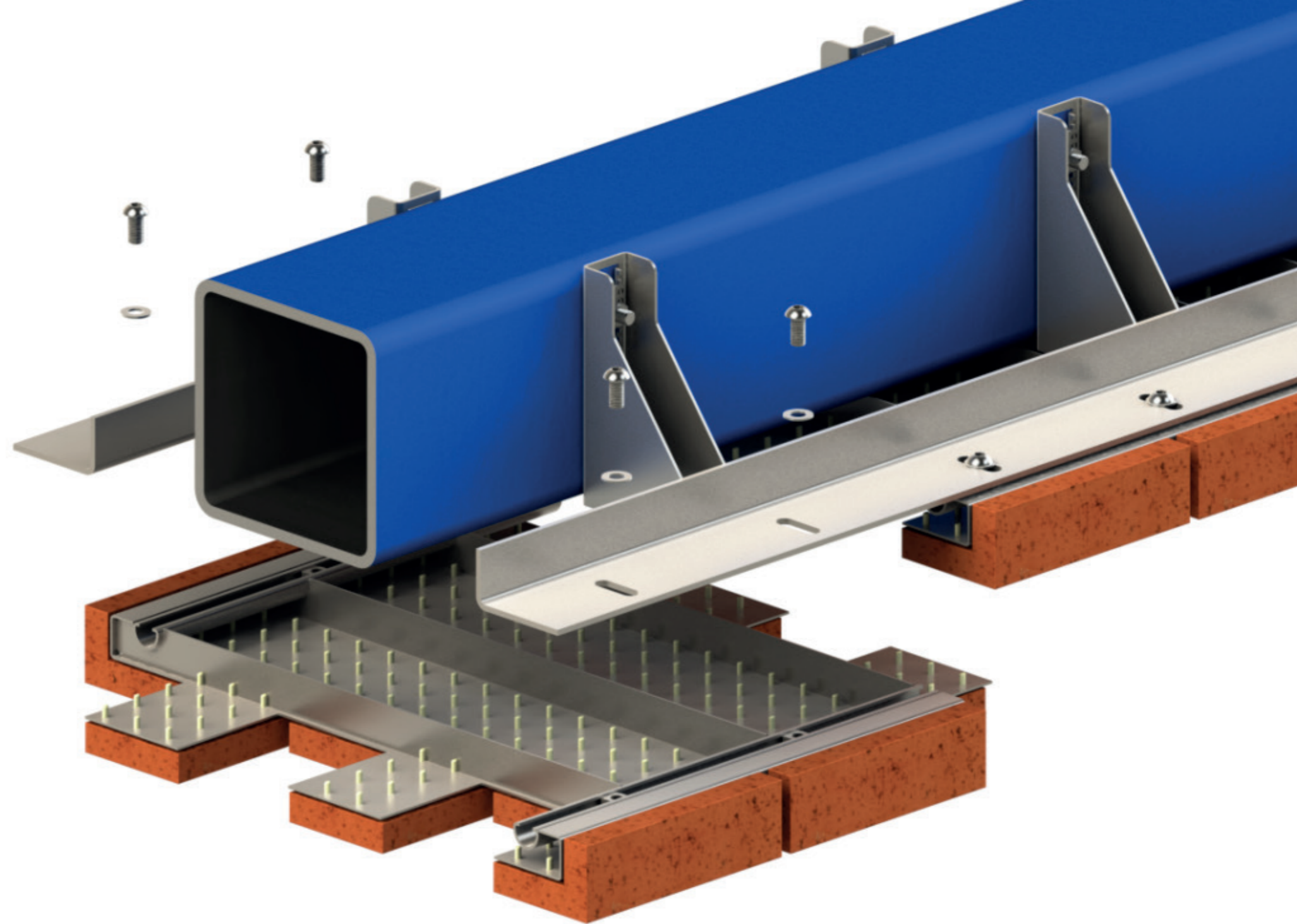
Special soffit units can be designed and fabricated to achieve almost any brick bond pattern creating soffit features and details of any size and layout. Our range of products are designed specifically to your requirements, for use with bonded brick slips allowing lightweight brick features to be created offsite in factory controlled conditions.



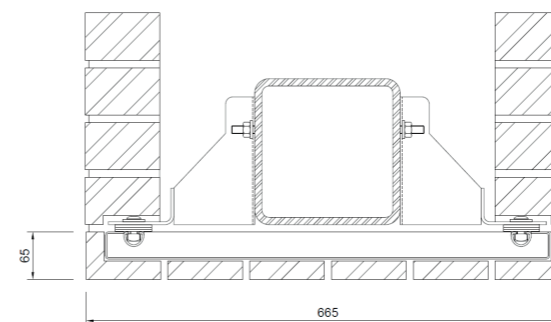
#### • Unit Sizes

Stretcher (225mm)	450 / 675 / 900 / 1125mm
Header (112.5mm)	450 / 562.5 / 675 / 787.5 / 900 / 1012.5mm
Soldier (75mm)	450 / 525 / 600 / 675 / 825 / 900 / 975 / 1050mm

- Limit Weight to 20kg Per Unit (Manual Handling)
- Chassis/Carrier Approx. 8-10kg
- Slip Approx. 1.00kg (10-12 Slips Per Unit)



665 x 65mm Stretcher Bond Special Soffit Bolt Up Unit

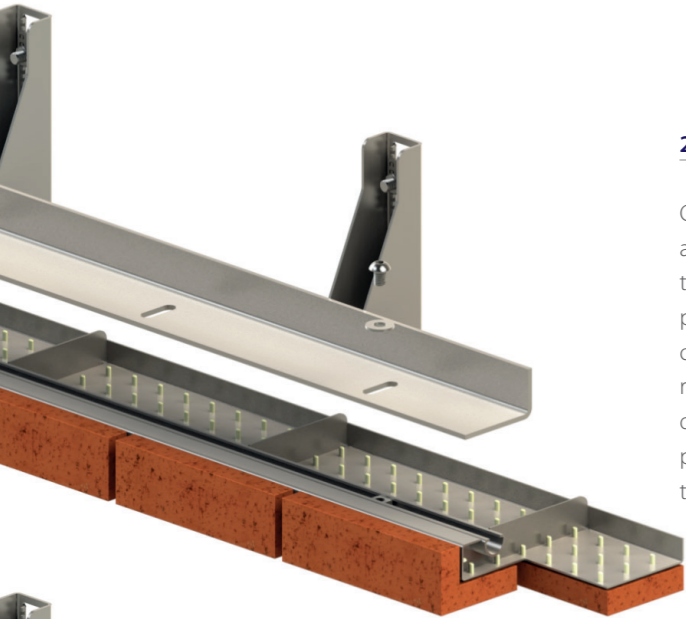


0844 850 0860  
www.acsstainless.com



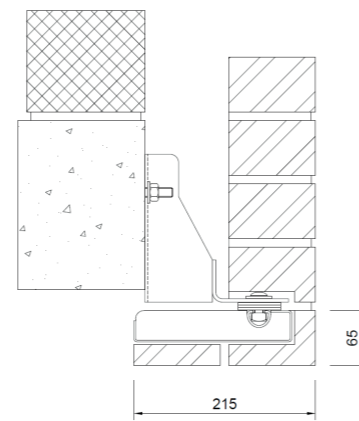
# Azure: modular brick faced soffits

Below are a few of the most popular configurations of ACS Azure soffits. This is not an exhaustive range. All systems are bespoke and project specific, therefore the options available are virtually limitless. Once ACS are engaged, your allocated design manager will tailor make your soffit solution to your exact requirements.



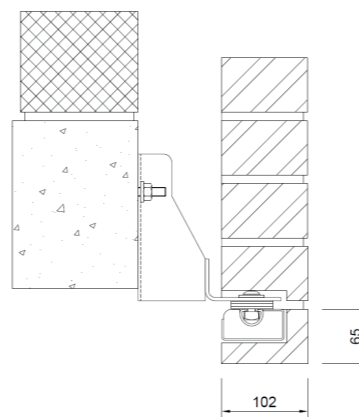
**215 x 65mm Stretcher Bond Soffit Bolt Up Unit**

Courses in with facing brickwork and provides continuity with the stretcher/running bond pattern as it returns to the soffit on the underside of the reveal or return. Adjacent soffit units are designed to interlock together, providing seamless continuity of the brick bond once pointed.

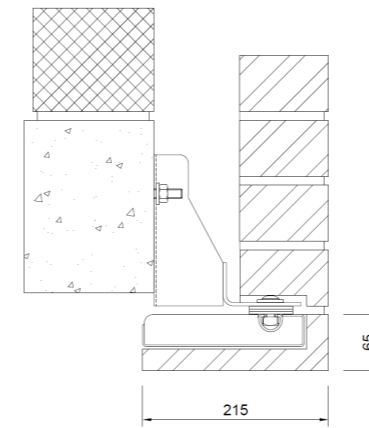


**102.5 x 65mm Stretcher Bond Soffit Bolt Up Unit**

Courses in with facing brickwork and providing continuity with the stretcher/running bond pattern as it returns to the soffit on the underside of the reveal or return. Adjacent soffit units are designed to abut with a nominal 10mm joint providing seamless continuity between the face/soffit once pointed.

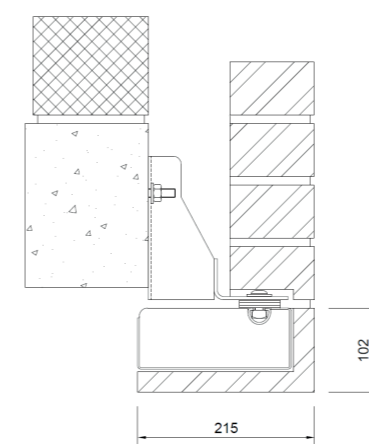


**215 x 65mm Header Bond Soffit Bolt Up Unit**



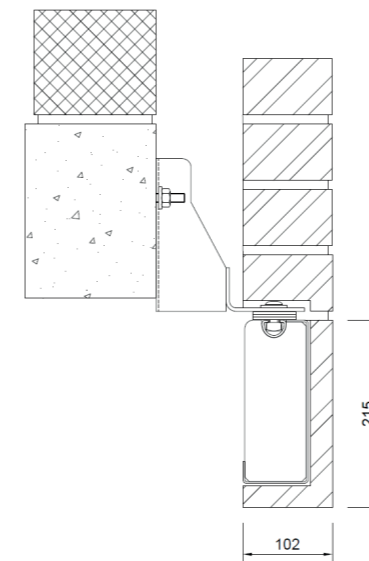
Provides a header detail at openings, returns and reveals to create a feature or detail to differentiate between the facing brickwork which is most commonly a stretcher/running bond pattern. Adjacent soffit units are designed to abut with a nominal 10mm joint providing a seamless face/soffit effect once pointed.

**215 x 102.5mm Rowlock Soffit Bolt Up Unit**

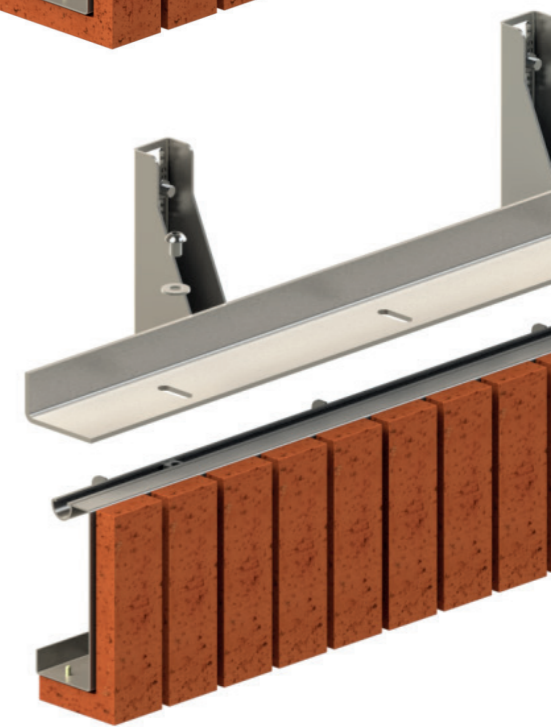
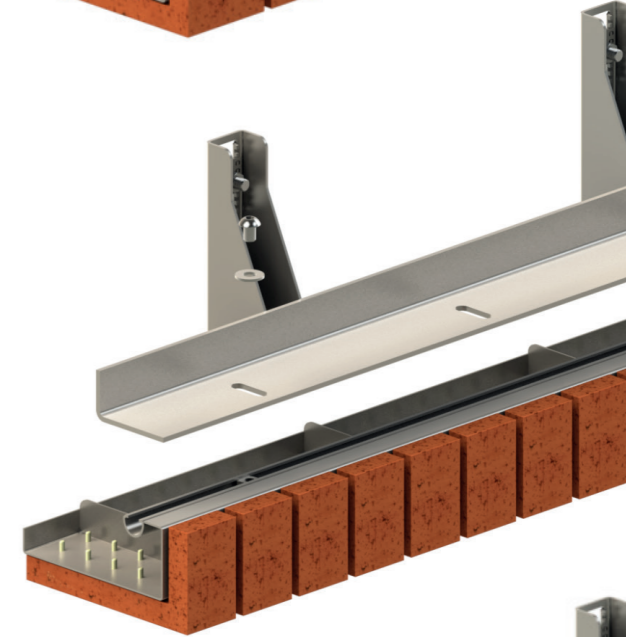


Provides a header/rowlock course detail at openings, returns and reveals to create a feature or detail to differentiate between the facing brickwork which is most commonly a stretcher/running bond pattern. Adjacent soffit units are designed to abut with a nominal 10mm joint providing a seamless face/soffit effect once pointed.

**102.5 x 215mm Soldier Bond Soffit Bolt Up Unit**



Provides a soldier course detail at openings, returns and reveals to create a feature or detail to differentiate between the facing brickwork which is most commonly a stretcher/running bond pattern. Adjacent soffit units are designed to abut with a nominal 10mm joint providing a seamless face/soffit effect once pointed.



# Azure: lintels stretcher, soldier, header

Azure lintels are lightweight brick faced prefabricated units that are manufactured off-site and are supplied to the project with brick slips resin bonded to the surface. In a controlled and uncontaminated factory environment a unique high performance bond is achieved. This advanced adhesion technique ensures that our product delivers unrivalled performance and eliminates the potential failures associated with other methods.

When used over door and window openings ACS Azure lintels remove the need for masonry support and artisan bricklayers. Azure lintels speed the construction process and guarantee a seamless blend of masonry to the installer.

Both the lintels and the brick slips have been independently tested by notified and technical approval bodies to evaluate and validate the load capacity, physical performance and long term durability of all components. The lintels have been designed in line with the requirements of BS EN 845-2 & BS 5977-1 and tested in line with BS EN 846-9. The brick slips are tested using the guidance of ETAG 034 to evaluate the accelerated freeze/thaw weather resistance both saturated and dried of the brick slips bonded to stainless steel to achieve a service life of 60 years. Further to this, the bond strength and impact resistance of the brick slips has also been tested before and after the accelerated cyclic weather tests to validate the integrity and durability of the system.

Azure lintels arrive to site in one piece and are produced from the same batch of bricks used on site so a perfect match is achieved blending Azure seamlessly with already constructed brickwork.

These lintels are then effortlessly positioned by semi-skilled construction operatives, removing the need for artisan bricklayers. Average installation times are reduced by 90%.

## Key Benefits

- Fraction of the price of site based construction.
- Labour costs reduced significantly by pre-fabrication off site.
- 50% lighter than the most traditional solutions.
- Installed as quick and easy as a standard lintel.
- Blends seamlessly with already constructed brickwork.
- Customised to clients requirements.



## Bond Strength & Impact Resistance tests include:

- Heat / Rain weathering to ETAG034 – Weathered samples only.
- Bond Strength testing using ETAG004 as guidance- Control and Weathered samples.
- Impact testing to ISO7892 -Control and Weathered samples.

## Load capacity tables showing acceptable loadings of 'L' section and 'C' section lintels

### Standard 'L' Section Lintel

Standard Lengths (mm)	600-1200	1201-1500	1501-2100	2101-3000	3001-3900	3901-4500
Total UDL (kN)	4	7	6	6	8	9
Lintel Height (mm)	88	131	167	215	215	215
Weight / Metre (kg)	2.90	3.58	4.16	4.93	7.37	9.79

### Heavy Duty 'C' Section Lintel

Standard Lengths (mm)	600-1200	1201-1500	1501-2100	2101-3000	3001-3900	3901-4500
Total UDL (kN)	9	12	12	11	13	13
Lintel Height (mm)	154	229	229	229	229	229
Weight / Metre (kg)	3.59	4.28	4.86	5.63	8.38	11.10

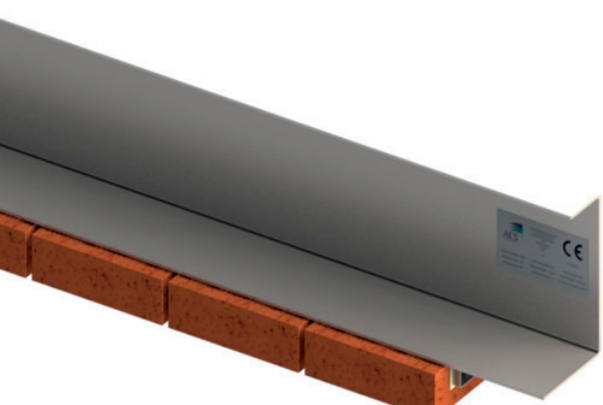


0844 850 0860  
www.acsstainless.com



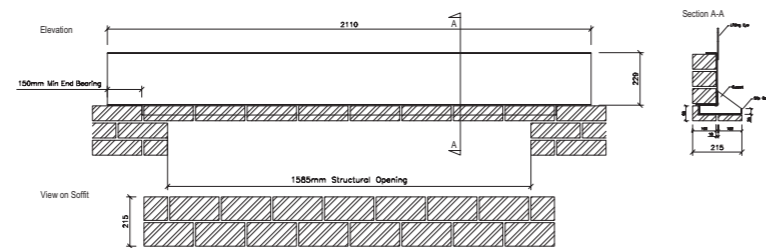
# Azure: lintels stretcher, soldier, header

Below are a few of the most popular configurations of ACS Azure lintels. This is not an exhaustive range. All systems are bespoke and project specific, therefore the options available are virtually limitless. Once ACS are engaged, your allocated design manager will tailor make your lintel solution to your exact requirements.



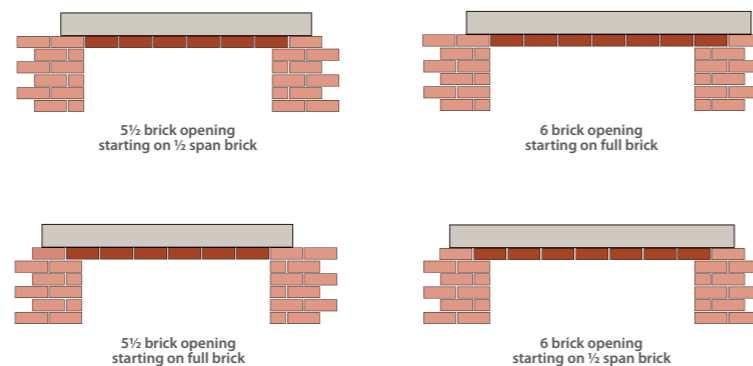
## Stretcher Bond Lintel Unit

The ACS Azure Stretcher Bond Lintel Range is designed to allow an opening to be created in a single leaf of masonry, typically the external leaf of a cavity with an integrated brick slip soffit feature. The brick slip soffit feature is bonded to the lintel carrier using a specially formulated resin adhesive in a header or rowlock bond. Azure stretcher lintels can be used to create continuity of brickwork on soffits or openings, seamlessly blending with facing brickwork and reveals where relevant whilst concealing the backing steel.



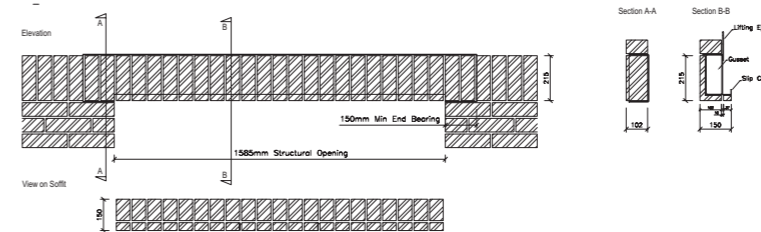
## Shuffle Brick

ACS Azure Stretcher Bond Lintels are typically supplied with a 'Shuffle Brick' arrangement to allow the lintel to be coursed into the facing brickwork regardless of whether the opening starts on a half or full brick. Structural openings are most typically set at divisions of full or half brick dimensions. The illustration opposite demonstrates how the stretcher bond lintel should be set to accommodate for the various coursing conditions.



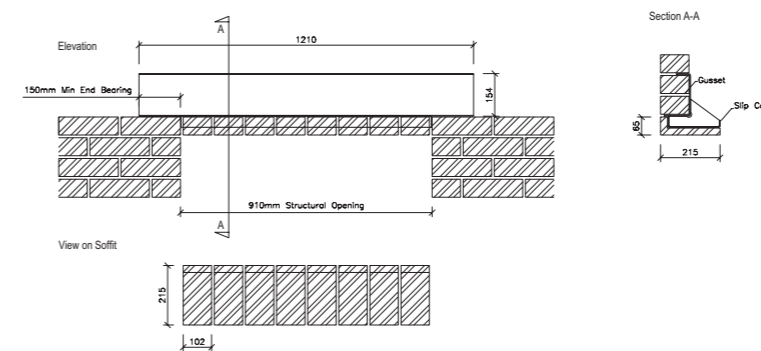
## Soldier Bond Lintel Unit

The ACS Azure Soldier Bond Lintel Range is designed to allow an opening to be created in a single leaf of masonry, typically the external leaf of a cavity with an integrated brick slip soffit feature. The brick slip soffit feature is bonded to the lintel carrier using a specially formulated resin adhesive in a soldier bond. Azure lintels can be used to create a feature at the window soffits or openings, differentiating between facing brickwork and reveals where relevant whilst concealing the backing steel.

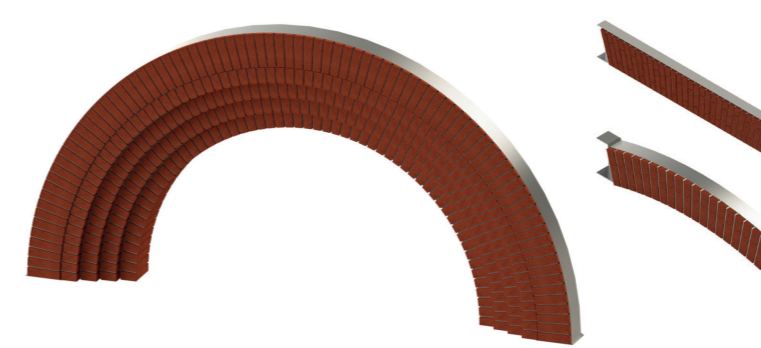


## Header Bond Lintel Unit

The ACS Azure Header Bond Lintel Range is designed to allow an opening to be created in a single leaf of masonry, typically the external leaf of a cavity with an integrated brick slip soffit feature. The brick slip soffit feature is bonded to the lintel carrier using a specially formulated resin adhesive in a header or rowlock bond. Azure lintels can be used to create a feature at the window soffits or openings, differentiating between facing brickwork and reveals where relevant whilst concealing the backing steel.



## Azure: Specialist Brick Slip Solutions



The ACS Azure system can be adopted to create solutions to numerous situations where previously artisan bricklayers or stonemasons would have been required. These include flat arch lintels, segmented arch lintels, corbelled gothic arch lintels and various panel systems.

**To discuss your requirements with an Azure specialist please contact your ACS regional office.**