

25/15 FrameFix™ For Mineral Wool Insulation



25/15 FrameFix™ For Mineral Wool Insulation

Fixed back to SFS

25/15 FrameFix™ For Mineral Wool Insulation



Check for updates



Product summary

ACS Framefix™ is designed to allow an outer leaf of a cavity wall constructed from masonry to be tied to a light steel frame or another structural element through mineral wool using a suitable fixing. The system comprises of a number of elements that work together to create a high strength structural restraint assembly.

The channel itself is formed from Ultra Steel allowing higher capacities than plain steel channels. Along the channel are a number of pre-punched holes which are spaced at close centres to allow the fixing point to be selected depending on the application. For light gauge steel frames the smaller hole is designed to be used with ACS high thread self drilling fixings. All ACS fixings used with Framefix™ systems are supplied in stainless steel based upon independent reporting and testing by leading industry consultants Sandberg LLP.

At each fixing point, a composite, high compressive strength sleeve is located to provide a high capacity fixing detail at even the largest of insulation thicknesses used on modern construction sites.

Once fixed, ACS 4000 range wall ties can be positioned at any point along the channel to suit the coursing of the masonry panel.

25/15 FrameFix™ For Mineral Wool Insulation



Product highlights

Fully compatible system

60 year warranty

Austenitic stainless steel
(Grade 1.4301)

Lucideon tested

2.7m standard lengths

Compression sleeves

Stainless steel fixings



System performance

Table 1.0 below provides the wall tie type performance values from PD6697 based on the standard stud centres of 600mm.

Panel Required Type (PD 6697)	Wall Tie Vertical CTRS (mm)	Fixing Vertical CTRS (mm)	Panel Design Resistance (kN/m ²)
Type 1	300	337.5	2.27
Type 2	450	337.5	1.51
Type 3	450	450	0.88

Table 1.0 – Channel Tie / Fixing Centres

For alternative performance requirements or spacings, please contact the ACS Technical Department for further information.

25/15 FrameFix™ For Mineral Wool Insulation



Compression sleeves

The ACS Framefix™ system is supplied with compression sleeves which correspond to the thickness of the insulation specified as selected in table 1.1. The sleeves are designed to ensure that the compressive strength and stability of the channel tie system are both achieved and maintained by preventing the channel deflecting during installation, and whilst under normal load. The sleeves are manufactured from a composite material with thermal conductivity of 0.600 W/mK.

High thread self drilling screws

ACS high thread self drilling screws are designed for light gauge steel applications and require no pre-drilling of the substrate. The fixings can be utilised up to a steel thickness of 6.0mm. The table below can be used to select the correct fixing for your application.

Installation

The channel is typically fixed back to the SFS/ Studwork through mineral wool insulation and CP board. Each fixing requires a compression sleeve to be pushed through the insulation to bear onto the CP board and stud work behind. Fixings can then be installed through the channel (small hole only) and sleeves, then driven into the SFS studs. Ties can then be positioned at any point along the channel length to suit the bed joint coursing at the required vertical centres (refer to Table 1.0). Installing through large holes in the channel is not permitted and as such will invalidate any system performance.

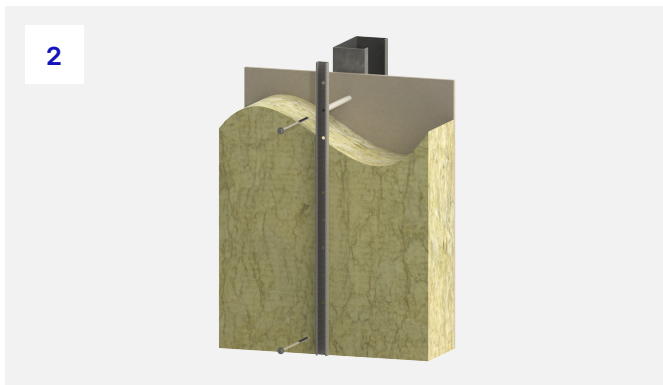
Insulation thickness (mm)	Sleeve size (mm)	Screw length (mm) SFS
50	50	105
60-70	60	105
75	75	130
80-90	80	130
100-110	100	150
120-125	120	180
130-140	130	180
150	150	210
160-170	160	210
180-190	180	230
200-210	200	270
220-230	220	270
240-250	240	300

Table 1.1 – Tech Screw Lengths

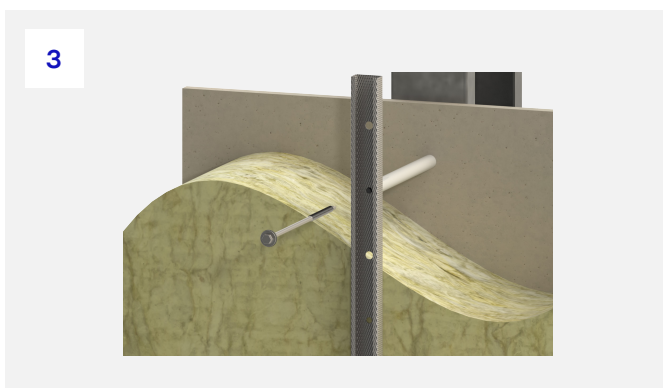
25/15 FrameFix™ For Mineral Wool Insulation



1. Mark out and install sleeves through insulation at centres shown in table 1.0.



2. Offer up channel to match sleeve locations.

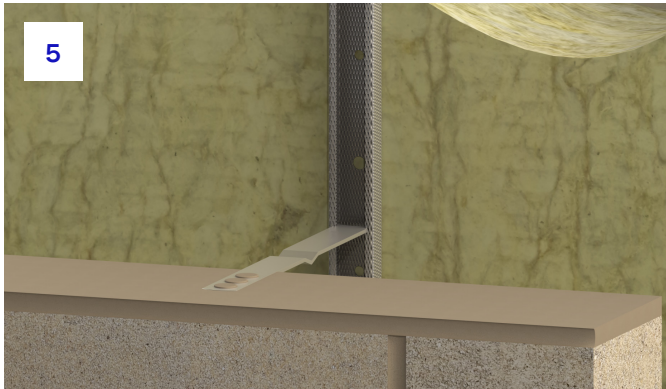


3. Install fixing through channel and sleeve back to internal structure.

25/15 FrameFix™ For Mineral Wool Insulation



4. Rotate ACS 4000 range tie into channel lips.



5. Embed tie into the mortar joint.

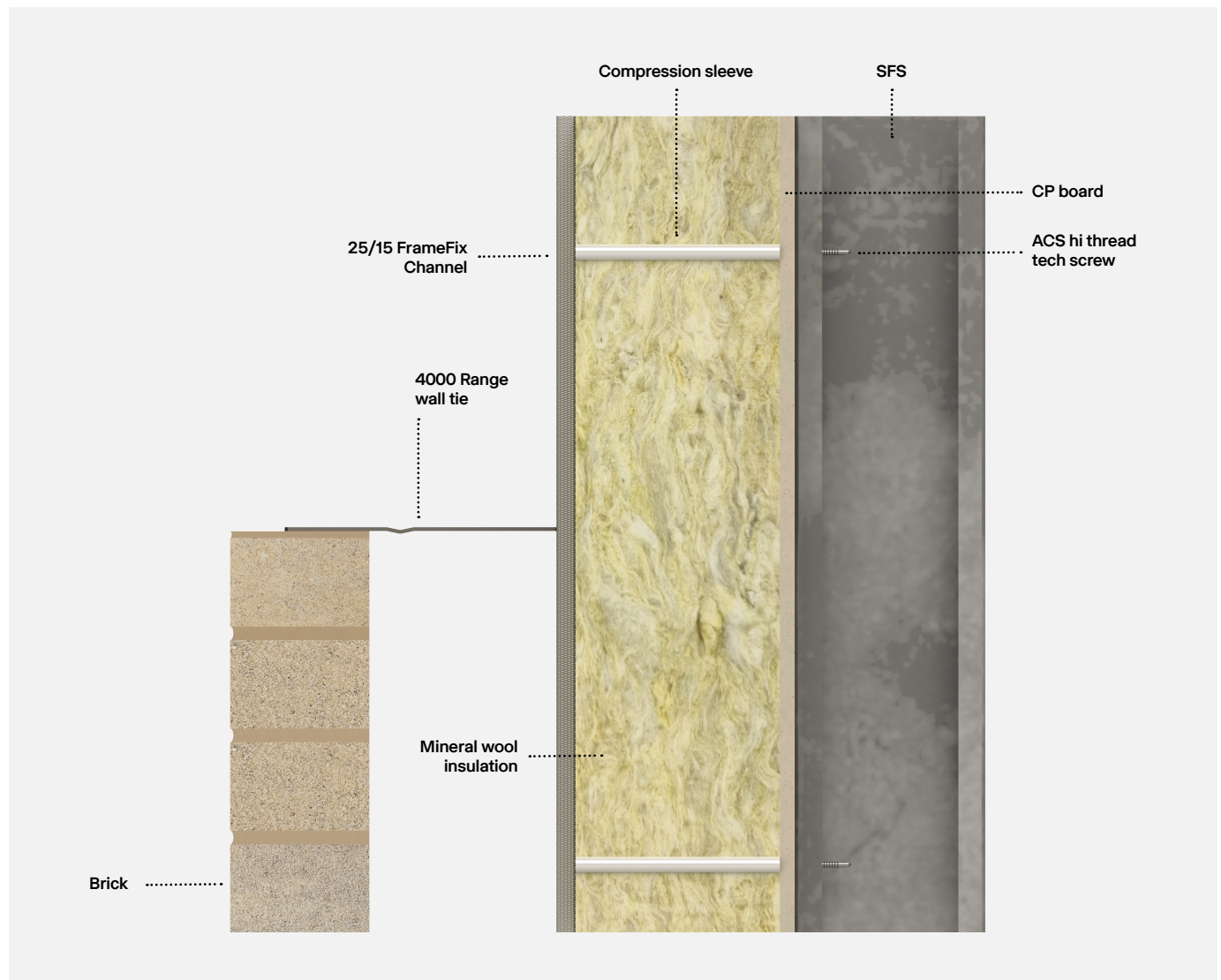
25/15 FrameFix™ For Mineral Wool Insulation



System warranty

The ACS SFS Framefix™ system comes with a full warranty. If used within the building envelope in a non-coastal location the system can be offered with a 60-year warranty. For full warranty conditions, please contact ACS.

Scan the QR code (right) to see how best to install Framefix™ to SFS with self-drilling screws.



25/15 FrameFix™ For Mineral Wool Insulation

Fixed back to concrete

25/15 FrameFix™ For Mineral Wool Insulation



Check for updates



Product summary

ACS Concrete Framefix™ is designed to allow an outer leaf of a cavity wall constructed from masonry to be tied to a concrete frame or another structural element through mineral wool using a suitable fixing. The system comprises of a number of elements that work together to create a high strength structural restraint assembly.

The channel itself is formed from Ultra Steel allowing higher capacities than plain steel channels. Along the channel are a number of pre-punched holes which are spaced at close centres to allow the fixing point to be selected depending on the application. For concrete applications the larger hole is designed to be used with ACS concrete fixings. All ACS fixings used with Framefix™ systems are supplied in stainless steel based upon independent reporting and testing by leading industry consultants Sandberg LLP.

At each fixing point, a composite, high compressive strength sleeve is located to provide a high capacity fixing detail at even the largest of insulation thickness' used on modern construction sites.

Once fixed, ACS 4000 range wall ties can be positioned at any point along the channel to suit the coursing of the masonry panel.

25/15 FrameFix™ For Mineral Wool Insulation



Product highlights

Fully compatible system

60 year warranty

Austenitic stainless steel
(Grade 1.4301)

Lucideon tested

2.7m standard lengths

Compression sleeves

Stainless steel fixings



System performance

Table 1.2 below provides the wall tie type performance values from PD6697 based on the standard stud centres of 600mm.

Panel Required Type (PD 6697)	Wall Tie Vertical CTRS (mm)	Fixing Vertical CTRS (mm)	Panel Design Resistance (kN/m ²)
Type 1	300	337.5	2.27
Type 2	450	337.5	1.51
Type 3	450	450	0.88

Table 1.2 – Channel Tie / Fixing Centres

For alternative performance requirements or spacings please contact the ACS Technical Department for further information.

25/15 FrameFix™ For Mineral Wool Insulation



Compression sleeves

The Concrete Framefix™ system is supplied with compression sleeves which correspond to the thickness of the insulation specified as selected in table 1.3. The sleeves are designed to ensure that the compressive strength and stability of the channel tie system are both achieved and maintained by preventing the channel deflecting during installation, and whilst under normal load. The sleeves are manufactured from a composite material with thermal conductivity of 0.600 W/mK.

Concrete screws

ACS concrete screws are designed for concrete applications and require a pilot hole to be drilled prior to installation. The required hole size can be found in the table below. The table can also be used to select the correct fixing for your application. Fixings should be selected and installed with an embedment length of between 30mm and 50mm.

Installation

Each fixing point will need marking out and a pilot hole drilling. For the required hole diameter, please refer to table 1.3. Compression sleeves can then be installed through the insulation and sat against the concrete behind. The fixing can then be installed through the channel (large hole) and compression sleeve, then into the concrete behind with an embedment of between 30mm and 50mm.

Ties can then be positioned at any point along the channel length to suit the bed joint coursing at the required vertical centres. (Refer to Table 1.0).

Insulation thickness (mm)	Sleeve size (mm)	Screw length (mm)	Pilot hole size (mm)
50	50	100	5
60-70	60	100	5
75	75	125	5
80-90	80	125	5
100-110	100	150	5
120-125	120	150	5
130-140	130	175	5
150	150	200	5
160-170	160	200	5
180-190	180	230	5.5
200-210	200	250	5
220-230	220	270	5.5
240-250	240	270	5.5

Table 1.3 – Concrete Screw Lengths

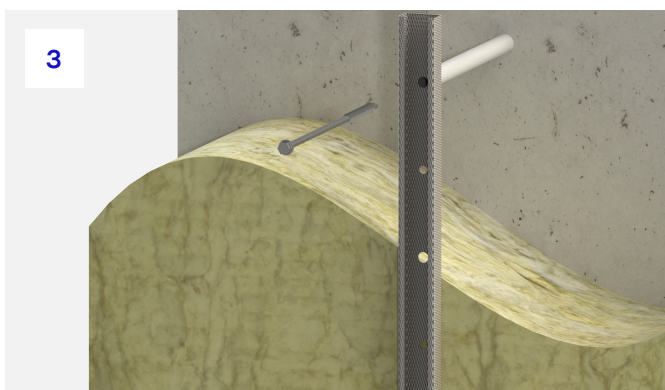
25/15 FrameFix™ For Mineral Wool Insulation



1. Mark out and install sleeves through insulation at centres shown in table 1.2



2. Drill pilot hole at diameter shown in table 1.2 at each fixing location

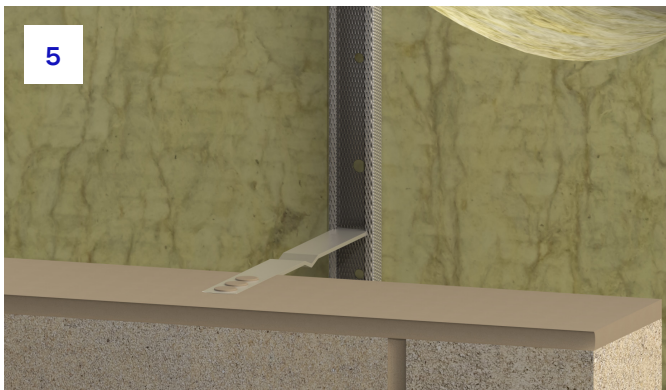


3. Install fixing through channel and sleeve back to internal structure.

25/15 FrameFix™ For Mineral Wool Insulation



4. Rotate ACS 4000 range tie into channel lips.



5. Embed tie into the mortar joint.

25/15 FrameFix™ For Mineral Wool Insulation



System warranty

The ACS Concrete Framefix™ system comes with a full warranty. If used within the building envelope in a non-coastal location the system can be offered with a 60 year warranty. For full warranty conditions, please contact ACS.

Installation parameters

Minimum concrete thickness — 100mm
 Minimum hole depth — 60mm
 Minimum fixing spacing — 40mm
 Minimum edge distance — 40mm

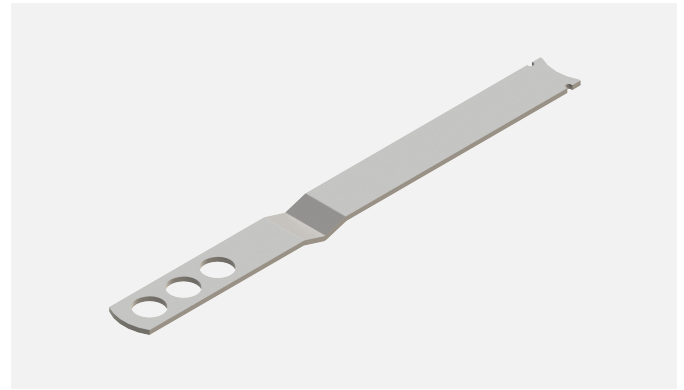


25/15 FrameFix™ For Mineral Wool Insulation



Tie lengths

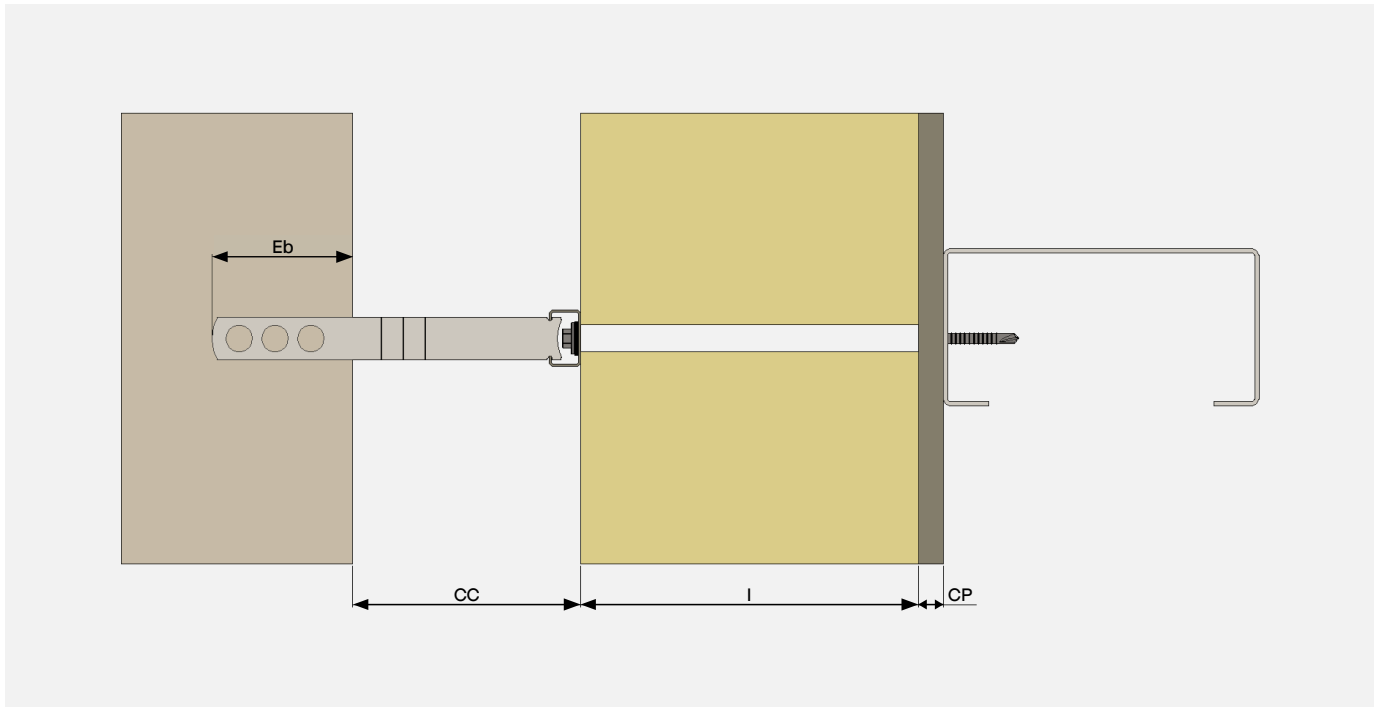
An ACS 4000 Range Channel Tie length should be selected to ensure a minimum of 50mm and a maximum of 75mm embedment is achieved. ACS recommends that ties should be selected to an embedment (Eb) of 62.5mm.



Tie reference	Tie length (mm)	Clear cavity range (mm)
ACS4000/100	100	40-65
ACS4000/125	125	66-90
ACS4000/150	150	91-115
ACS4000/175	175	116-140
ACS4000/200	200	141-165
ACS4000/225	225	166-190
ACS4000/250	250	191-215
ACS4000/275	275	216-240
ACS4000/300	300	241-265
ACS4000/325	325	266-290
ACS4000/350	350	291-315
ACS4000/375	375	316-340

Table 1.4 – Tie Lengths

25/15 FrameFix™ For Mineral Wool Insulation



Although ACS Framefix™ channel is supplied in 2.7m lengths, it is likely that smaller pieces will be required on site. The channel can be cut down on site as required, however there must always be 2no. fixings minimum in the length of channel.



Built on tradition. Driven by innovation.

Get in touch to learn more
about how Framefix™ can help
you deliver your next project.

0113 391 8200
info@acsstainless.co.uk
acsstainless.co.uk

 ACS Stainless Steel Fixings Ltd
 [ACSStainlessSteelFixings](https://twitter.com/ACSStainlessSteelFixings)