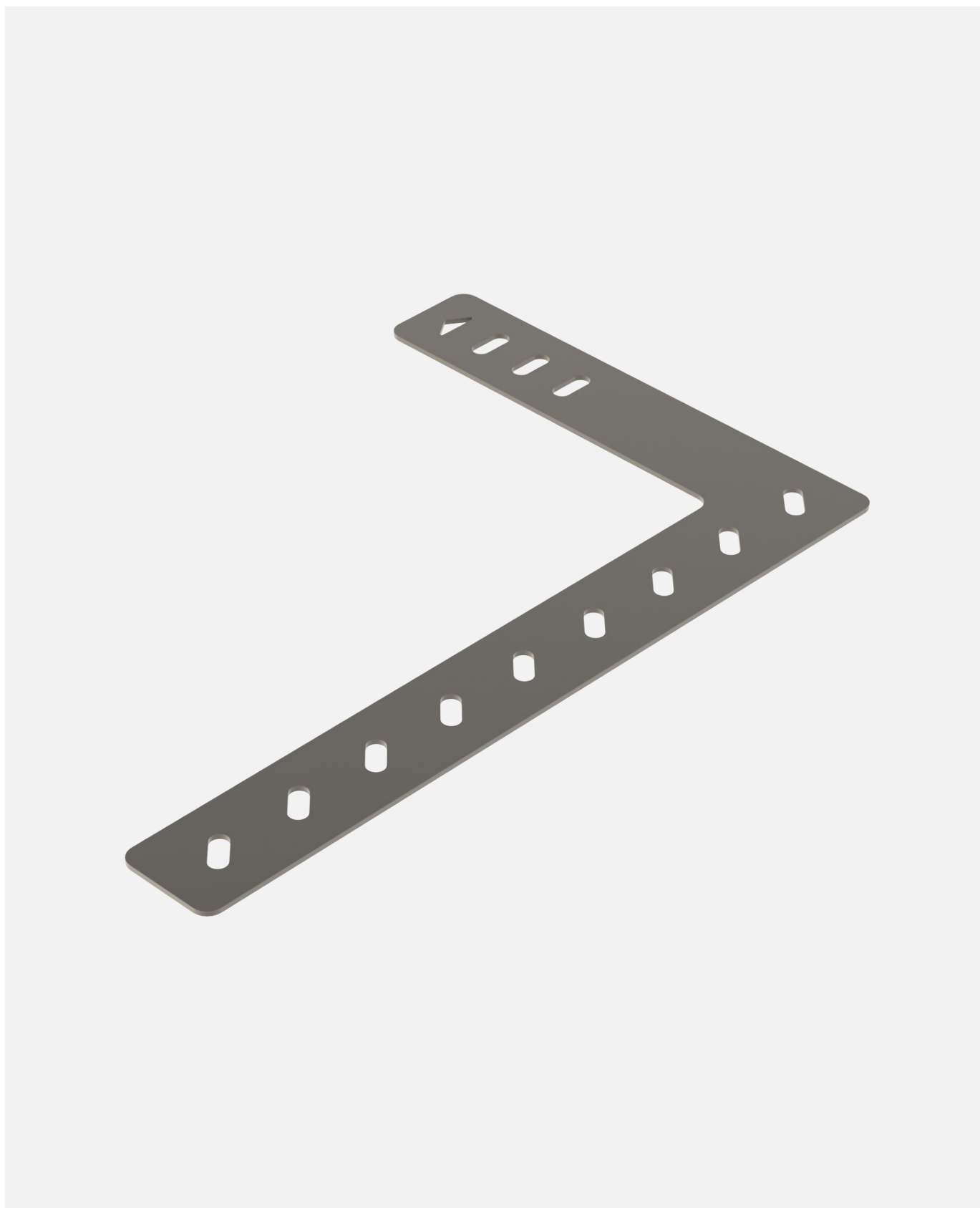
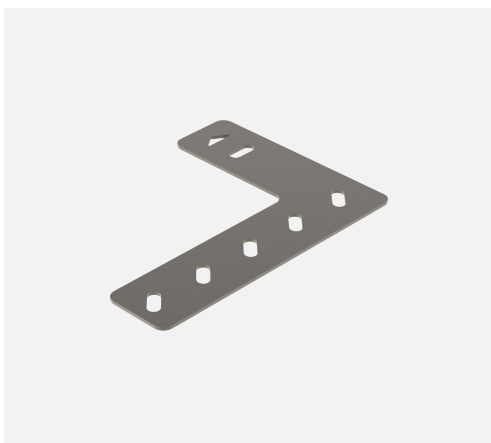
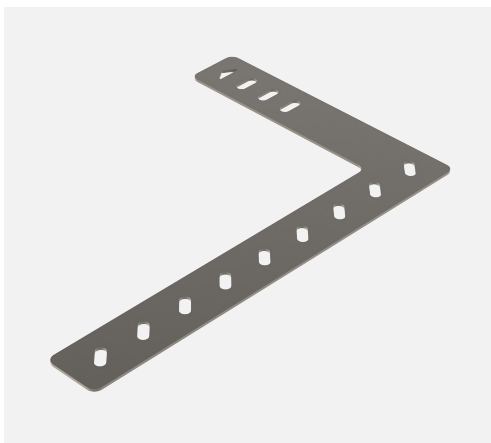


# Reveal Plates

---



# Reveal Plates



## Half and full brick reveals

ACS reveal plates can be used to support the lower courses of brickwork on a window reveal until the wall has reached sufficient strength, so as to support itself. The plate is to be placed upon a bed of mortar and the bricks placed on the main section of the plate first. This will give the system the required strength to place the reveal brick upon the angle. Once the first course of brickwork is in place, the remaining brickwork can be constructed as usual.

ACS can provide standard reveal plates for both 215mm and 327.5mm deep plates. If a larger size is required, please contact ACS Technical department.



Built on tradition. Driven by innovation.

Get in touch to learn more  
about how ACS can help  
you deliver your next project.

0113 391 8200  
[info@acsstainless.co.uk](mailto:info@acsstainless.co.uk)  
[acsstainless.co.uk](http://acsstainless.co.uk)

 ACS Stainless Steel Fixings Ltd  
 ACSStainlessSteelFixings