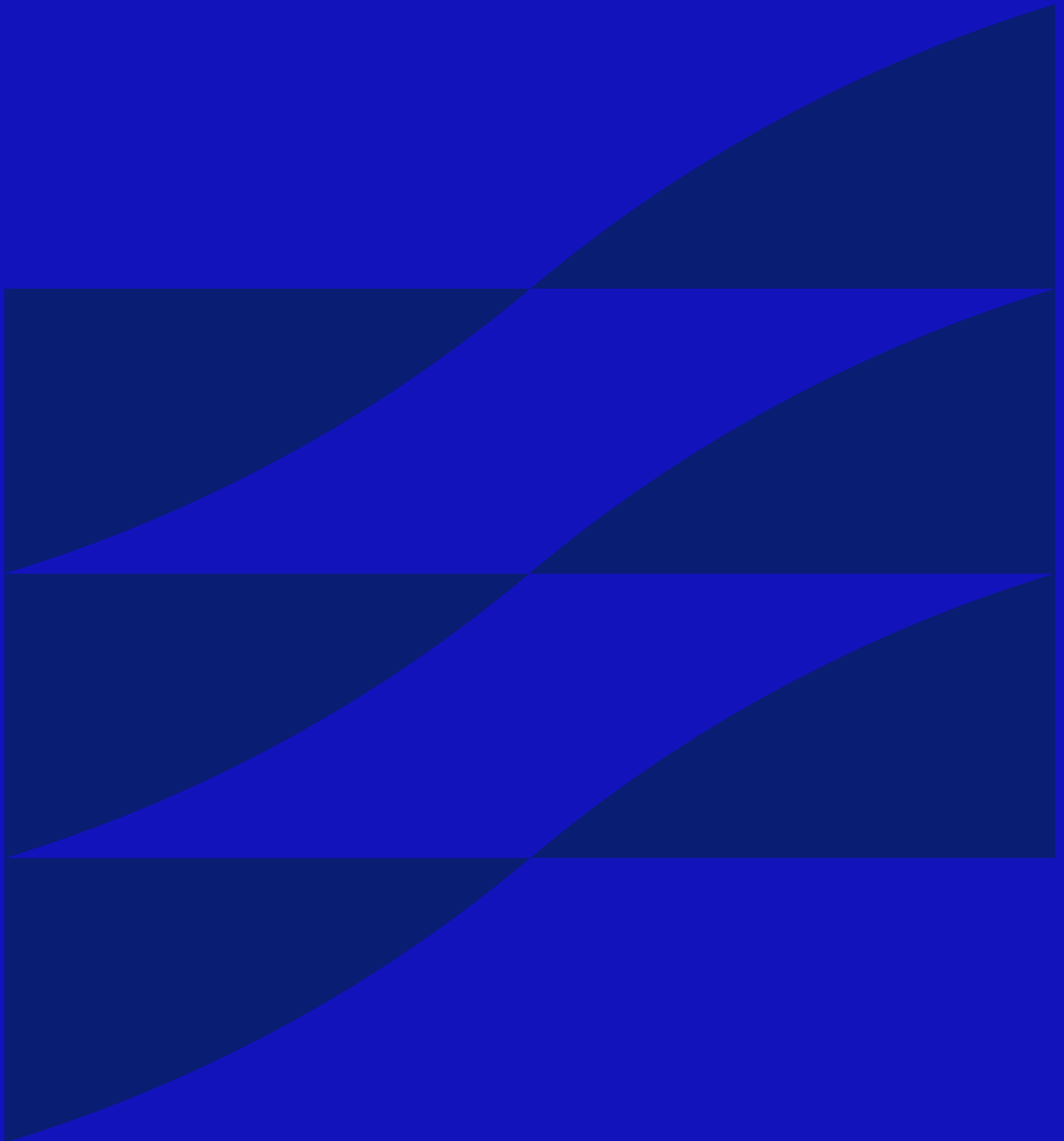
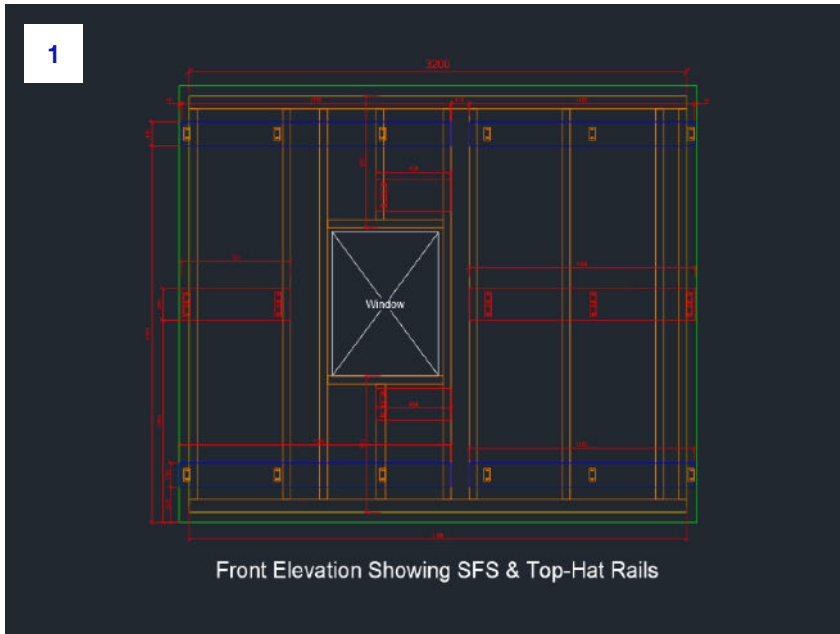


Certus™ Modular Brick Façade System



Certus™ Modular Brick Façade System



1. Top-hat rails (SFS walls only)

- a. Mark out the vertical positions of the top-hat rails as per the approved ACS designs.
- b. Using a stud finder, mark out the positions of the SFS studs within the wall build-up.
- c. Using a horizontal laser line, position the rail in place and fix back into the SFS studwork at one end.
- d. Use spirit level to ensure the rail is level and fix back into the studwork with two fixings per stud.
- e. Repeat steps c and d for each top-hat rail specified on the approved designs.



Certus™ Modular Brick Façade System



2. Helping hand brackets

- a. Mark out the horizontal positions of the helping hand brackets as per the approved ACS designs, working from a single datum point to minimise variations.
- b. Using a vertical laser line, fix helping hand brackets back to the top-hat rail using specified fixings, ensuring the correct size brackets are used in each rail.
- c. Use a spirit level to ensure the brackets are mounted plumb and in-line with those above/below.
- d. Move the laser to the next mark and continue to install the brackets as outlined in steps b and c.



Certus™ Modular Brick Façade System



3. Insulation/cavity barriers

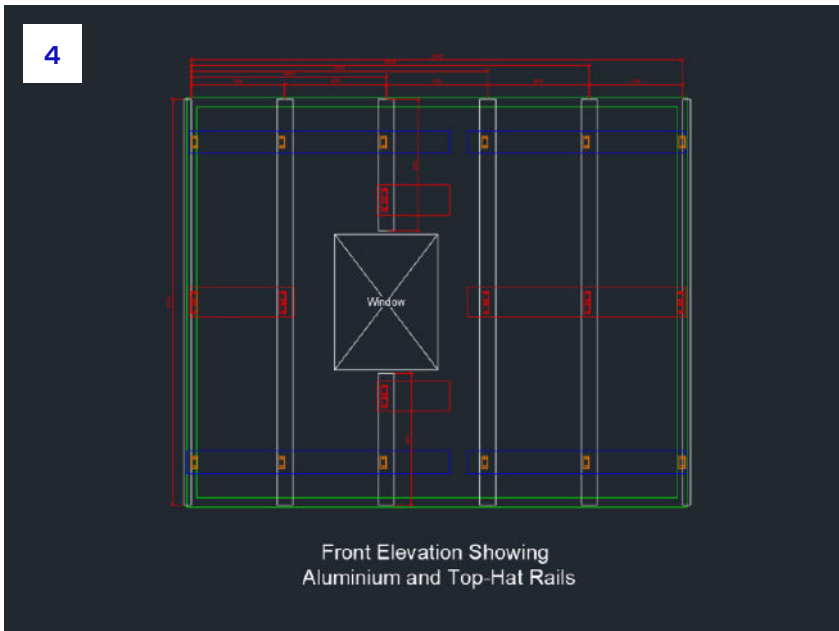
- a. Set out the fire barrier positions to the approved drawings provided by the client's design team.
- b. Follow the manufactures installation instruction regarding orientation, fixings and fixing pattern for the insulation and fire barriers, ensuring the correct ventilation gap is left where ventilated cavity barriers are used.
- c. Cut slits in the back side of the insulation 50mm deep corresponding with the positions of the top-hat rails.
- d. Cut penetration slots for the helping hand brackets to penetrate through the insulation for the aluminium rails to fix to.

Certus™ Modular Brick Façade System



4. Aluminium rails

- a. Check with the approved designs which rail is required (Tor L section) and place the aluminium rails into the clips of the helping hand brackets.
- b. Adjust the rails to ensure the correct cavity spacing is achieved as per the approved ACS designs.
- c. Check the rails are plumb using a spirit level.
- d. Fix through the brackets into the rails using the fixings provided, taking extra care to use the correct fixing holes for fixed point brackets (FPB) and sliding point brackets (SPB).



Certus™ Modular Brick Façade System



5. First row of panels

- a. Set horizontal laser line to the height of the tops of the first row of panels as shown on the approved ACS designs.
- b. Place the first panel in position ensuring the horizontal placement is correct to the designs, leaving a 5mm spacing between the previous panel and secure in place with spring clamps.
- c. Align the top of the panel with the laser line and check with a spirit level, adjust as required.
- d. Fix the panel in place using the specified fixings in the open fixing holes (6 per standard panel).
- e. Remove spring clamps, check with spirit level (crucial on first row) and repeat for remaining panels in row leaving a 5mm spacing between panels.

Certus™ Modular Brick Façade System

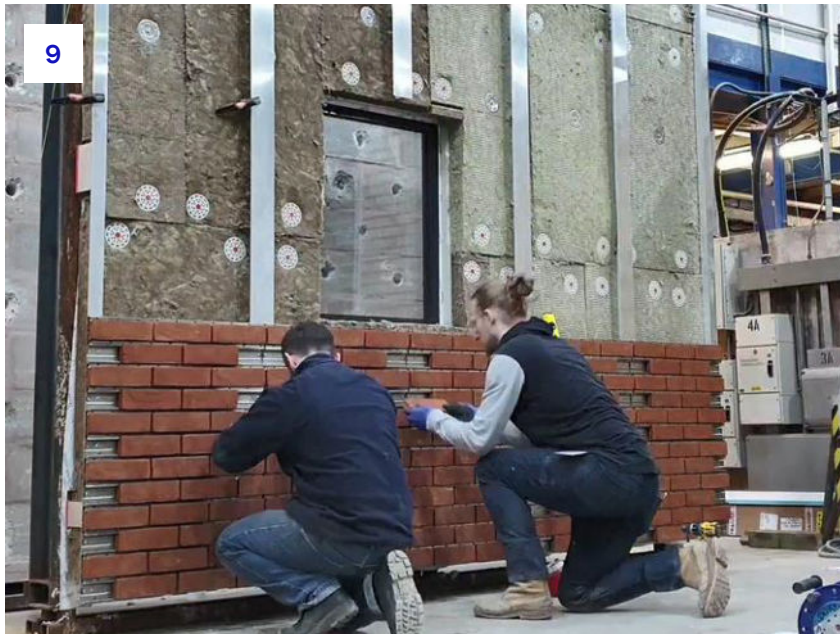


6. Upper row of panels

- a. Set horizontal laser line to be at height with the tops of the panels as stated on the approved ACS designs.
- b. Place the first panel in position on top of the first row and allow the alignment tabs to interlock as it drops into place.
- c. Adjust the panel horizontally until aligns with the one below, leaving a 5mm space between the previous panel and secure into place with spring clamps.
- d. Repeat steps 4c – 4e until row is complete.



Certus™ Modular Brick Façade System



7. Corners and reveals

a. Reveals and corners are installed in the same way as standard panels but must be checked for level across both their faces. No additional fixings are used down the centre jointing plate, only the edges in every other channel as with the standard panels.

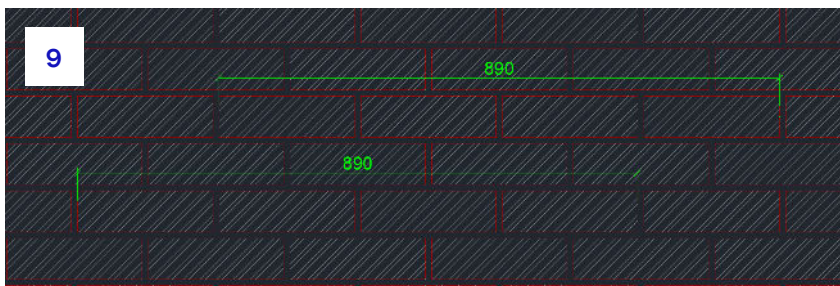
8. Soffits

a. Soffits are installed with the same approach as the standard panels, however extra care must be taken to ensure they are installed level and in the correct position as they are not placed above other panels.

9. Install stitching bricks

a. When all panels are in place, insert the stitching brick over the fixing points of the panels, taking care to check the stitching brick is centred and the perp joints are even.

b. Check the coordinated brick lengths are correct. If using standard sized slips (215mm x 65mm), measure the length of 4 bricks and this should equal 890mm if the spacing is correct (as in below image); if not, adjust accordingly.



Certus™ Modular Brick Façade System



10. Pointing

- a. Once all the stitching bricks are in place and a section of wall is completed, use specified pointing mortar to manufacturers' instructions ensuring the correct bond profile is used as specified on the approved designs.



Built on tradition. Driven by innovation.

Get in touch to learn more
about how Certus™ can help
you deliver your next project.

0113 391 8200
info@acsstainless.co.uk
acsstainless.co.uk

 ACS Stainless Steel Fixings Ltd
 [ACSStainlessSteelFixings](https://twitter.com/ACSStainlessSteelFixings)