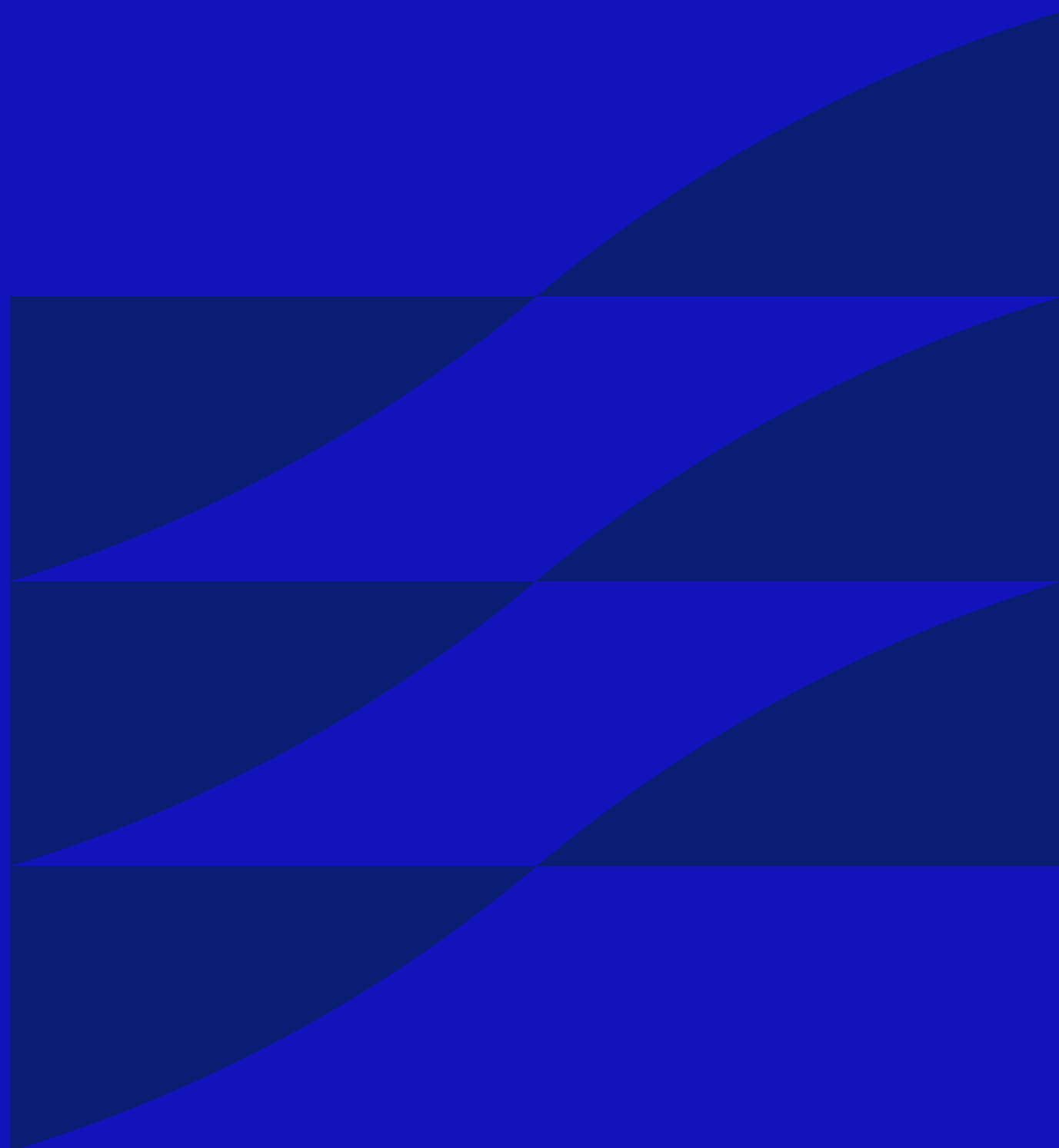
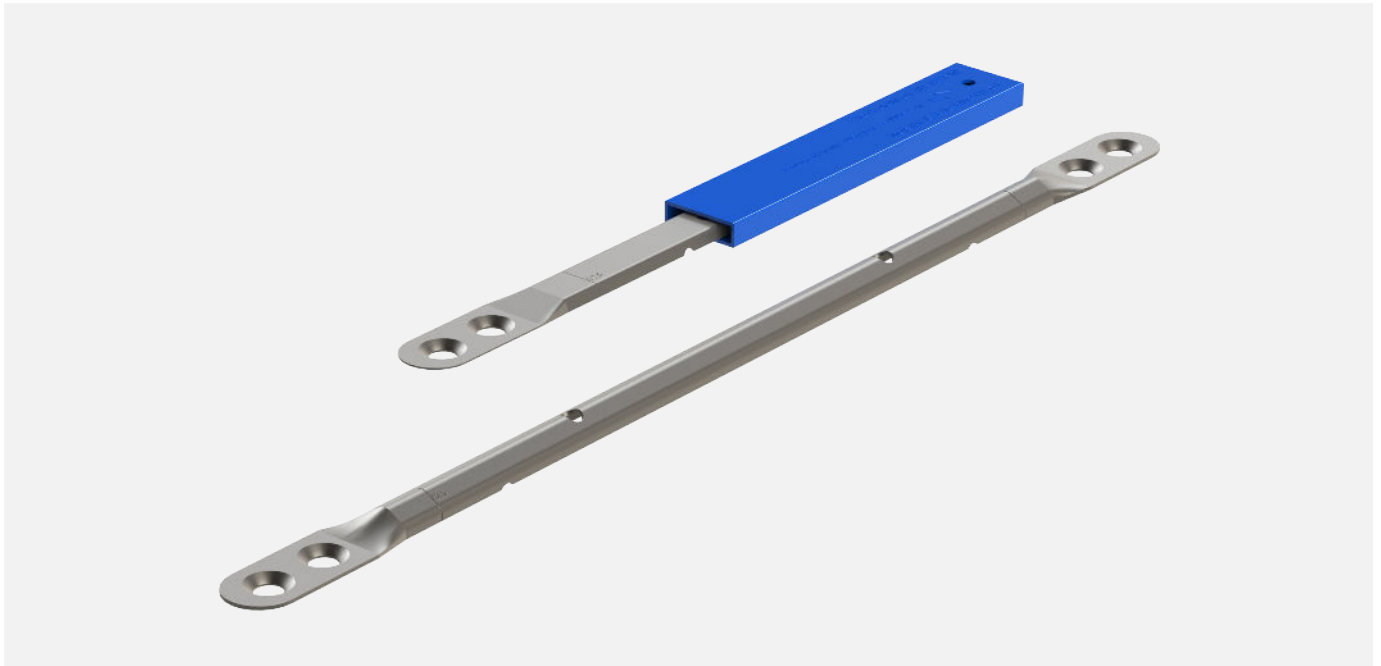


# Channels and Ties

---



# Channels and Ties



## Handling

Remove item(s) from transportation vehicle in accordance with local site safety requirements (subject to HSE regulations). Be careful of potential sharp edges and stability following transportation.

Consider if it is safer to move the pallet (as a whole) to a specific location within the site which is best suited to the general distribution of the individual item(s), or if it is safer to break the pallet up (into individual items) for distribution throughout the site.

The pallet should be placed in the correct location for distribution. Remove individual item(s) from the pallet using mechanical equipment if necessary. Move the item(s) safely to their installation location with mechanical assistance if needed. If not, check the lifting guidelines in line with HSE regulations to determine the number of individuals required to move them safely. Item(s) stored adjacent to their installation location should not pose a hazard to site operatives. If it is safer to break up the pallet into individual item(s) for distribution, follow the same process to move them safely.

## Storage and transportation

ACS approved hauliers should ensure that the load is safe and secure for the journey, and pallets are unloaded and reloaded at the distribution centre in a considered, safe and orderly fashion.

ACS recommends that all pallets should be inspected immediately following the (on site) off-loading process, for any obvious signs of damage.

## Installation

To ensure safe and secure installation, we recommend the following:

- A trained operative should be responsible for the installation, working in accordance with current HSE manual handling legislation.
- Refer to the relevant ACS product data sheet for specific installation instructions.

# Channels and Ties



## Guidance for interface with other products

It is expected that all issues of interface with other products should be fully addressed through the design and approval process. There should not be any obstacle to, or interference with the installation and operation of an ACS product.

## Guidance to achieve stated performance

In order to achieve the performance stated on our data sheets item(s) must be installed in strict accordance with the information provided.

## Specialist equipment and tools

Most products can be installed using a general construction workers toolkit. See delivery documentation for specific instructions.

## Specific competence required

Whilst the skill set required for the installation of a typical product would be covered by those of a general (construction industry) fitter, ACS recommend the Association of Brickwork Contractors or similar short courses.

## Implications for maintenance warranties, guarantees and insurance

All warranties, guarantees and insurances are null and void if the products are incorrectly installed.

There are no maintenance requirements for ACS products. While the immediate environment around a product may vary, in each case these item(s) are designed to operate within that particular environment for the design life of the building. ACS' product guarantees accommodate this expectation.

# Channels and Ties



Check for updates



## Inspection, testing, commissioning, and record keeping requirements

Inspection and record keeping requirements would be as specified within the building's 'operation and maintenance' manual, insofar as it is concerned with the general fabric of the building.

## Maintenance requirements and schedule

All ACS products are designed to be maintenance free and therefore require no scheduled maintenance.

## Legal requirements

While ACS exercise a duty of care with regard to our products and supporting professional services, and all ACS products are fully warranted regarding their performance, it remains the responsibility of the project engineer to determine the suitability of materials, types, and their resultant load capacities.

It is the responsibility of installation contractors and sub-contractors to ensure that their work is carried out to the required industry standards. ACS cannot be held responsible for any failures arising from incorrect installation.

## Disposal of non-recyclable materials

As specified in the product data sheet, certain products may contain non-recyclable materials such as polystyrene infill or other components that cannot be processed through standard recycling channels. Whenever possible, ACS recommends reusing non-recyclable elements rather than disposing of them immediately. For example, polystyrene infill can sometimes be repurposed for packaging or other construction purposes, depending on its condition and suitability. When reuse is not an option, non-recyclable components should be disposed of through landfill.



Built on tradition. Driven by innovation.

Get in touch to learn more  
about how ACS can help  
you deliver your next project.

0113 391 8200  
[info@acsstainless.co.uk](mailto:info@acsstainless.co.uk)  
[acsstainless.co.uk](http://acsstainless.co.uk)

 [ACSStainlessSteelFixings](#)  
 [ACS Stainless Steel Fixings Ltd](#)