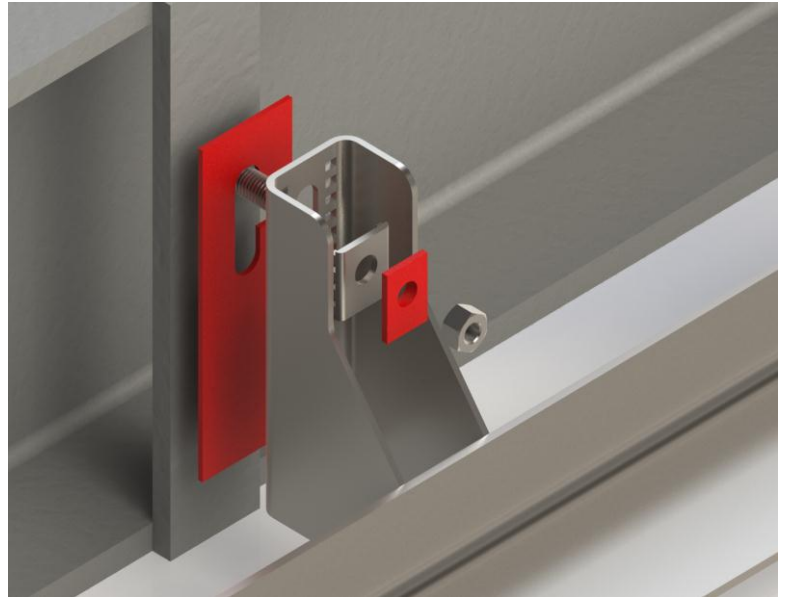


ACS Thermo Shim & Washer

- ✓ **Low Thermal Conductivity**
- ✓ **High Compressive Strength**
- ✓ **Prevents Bi-Metallic Corrosion**
- ✓ **Easy Installation**
- ✓ **Available to suit any ACS Bracket**
- ✓ **Off the Shelf**

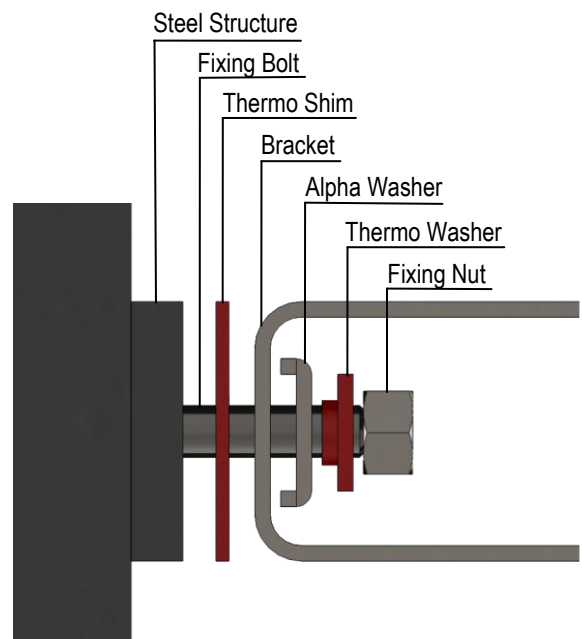


Product Introduction

The ACS Thermo range is designed to reduce the effect of cold bridging whilst eliminating bi-metallic corrosion within a masonry support system. The system consists of a 3mm thick fibre-reinforced composite shim and washer that act together to isolate the bracket-angle and fixing from the primary structure. The fibre-reinforced composite material is flame retardant and water resistant. It has a compressive strength comparable to that of stainless steel and has a thermal conductivity less than 0.3 W/m.K which is a factor of over 50 times less than that of stainless steel.

Installation & Best Practice

The ACS Thermo Shim must be installed to ensure the bracket is fully bearing on the shim particularly at the heel of the bracket. The washer component should be inserted between the ACS Alpha Washer and the fixing nut so that the washer collar is located in the hole on the ACS Alpha Washer and bracket. This will ensure the strength of the system is maintained and the system remains isolated reducing thermal bridging and preventing bi-metallic corrosion.



For further information or technical assistance please contact the ACS Technical Department on 0870 850 0860 or email technical@acsstainless.co.uk

LEEDS
Cross Green Approach
Cross Green Industrial Park
Leeds LS9 0SG
Tel: +44 (0)113 391 8200
Fax: +44 (0)113 391 8209

LONDON
Crown House
Home Gardens
Dartford

Tel: +44 (0)1322 424 510
Fax: +44 (0)1322 424 504

GLASGOW
Festival House
150 Brand Street
Glasgow G51 1DH

Tel: +44 (0)141 314 0048
Fax: +44 (0)141 314 0026